



BRAND
HYDRAULICS Co.

Made in the Heartland of America
Serving the World

Engineering & Manufacturing Solutions

MS

Manual Selector Valve

Specifications:

- Rated for 3000 psi (207 bar).
- Flow rating
 - 3/4" NPT 0-30 gpm (0-113 lpm).
 - #16 SAE 0-45 gpm (0-170 lpm).
- 30-Micron filtration recommended.
- Weight
 - MS75 / MS12 5.5 lbs. (2.5 kg).
 - MS16-SAE 9 lbs. (4.1 kg).
- Standard port sizes.
 - 3/4" NPT / #12 SAE.
 - #16 SAE (1 5/16-12) all ports.
- Free reverse flow option (MS75 / MS12 only).



PMSC12-SO



PMS16-SAE

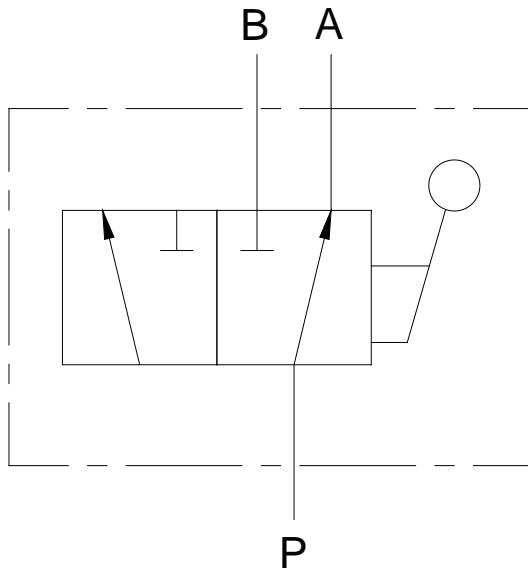


ISO 9001:2008 WITH DESIGN
Certificate #02.002.1



402.344.4434 • www.brand-hyd.com

MS16-SAE OR MS75-3/4 / MS12-SAE



PMS16-SAE



PMSC12-SO

MATERIALS:

- High Strength Cast Iron Body (MS16-SAE)
- Cast Iron Body (MS75)
- Buna N O'Rings
- IOSSO Plated Steel Spools

FEATURES:

- PRECISION GROUND IOSSO PLATED SPOOL that assures long life.
- O'RING PORTS to eliminate leakage (MS16-SAE & MS12-SAE).
- RIGID HANDLE allows customer to shift spool smoothly.
- OPTIONAL SPRING OFFSET holds spool in one active position (P to A in offset position and 3/4" NPT & #12-SAE).

MS – GENERAL INFORMATION:

The Brand, MS two-position manual selector valves are available in two different sizes MS75 /MS12 and MS16-SAE. The MS16-SAE allows up to 45 gpm (170 lpm) out of either port and has a manual handle for effortless shifting of the spool. The MS75/ MS12 allows up to 30 gpm (113 lpm) out of either port and has a “T” grip handle for effortless push/pull shifting of the spool. The inlet is orificed to ports A and B when the spool is being shifted from port A to port B or vice versa.

MS – COMPLETE LIST OF MODEL CODES:

- MS12-SAE**.....12 SAE all ports and rated for 0-30 gpm (0-113 lpm).
- MS75-3/4**.....3/4” NPT all ports and rated for 0-30 gpm (0-113 lpm).
- MS12-SO**.....12 SAE all ports, rated for 0-30 gpm (0-113 lpm) and spring offset (P to A in offset position).
- MSC12-SO**.....12 SAE all ports, rated for 0-30 gpm (0-113 lpm) and spring offset, with free reverse flow.
- MSC75-SO**.....3/4” NPT all ports and rated for 0-30 gpm (0-113 lpm), spring offset, with free reverse flow.
- Paint (Optional)**.....(P) painted black (other colors available, consult factory), (MP) epoxy coating.

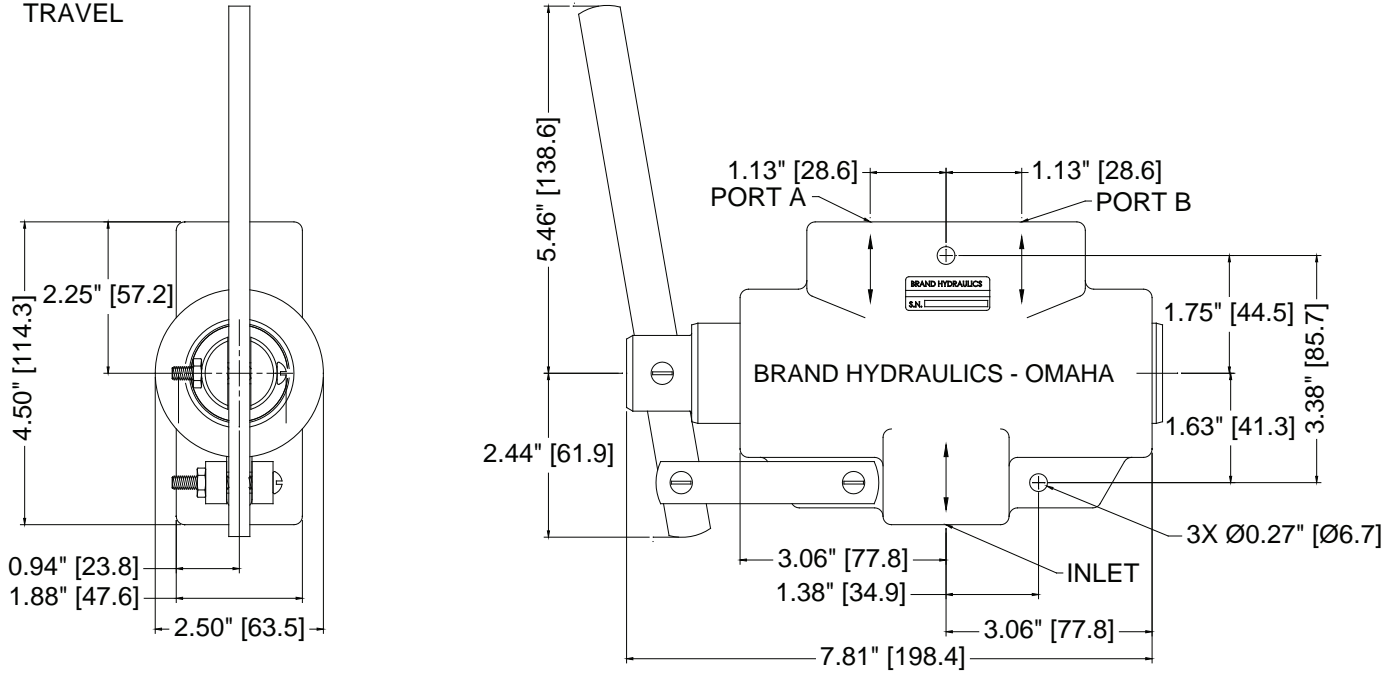
MS – COMPLETE LIST OF OPTIONS AND ACCESSORIES:

- LMS-K**.....Seal kit for MS16-SAE valve.
- MS-K**.....Seal kit for MS75 & MS12 valves.



DIMENSIONAL DATA: inches & [millimeters]

MS16-SAE
0.63" [16.0] SPOOL
TRAVEL



MS75-3/4 or MS12-SAE
0.50" [12.7] SPOOL
TRAVEL

