



**BRAND**  
HYDRAULICS Co.

Made in the Heartland of America  
Serving the World

Engineering & Manufacturing Solutions

# SHV

Shuttle Valve

## Specifications:

- Pressure rating 3000 psi (207 bar).
- See "GEN. INFO." for flow, pressure drop and porting.
- Weighs – SHV50C 1.25 lbs (.57 kg).  
- SHV25 0.5 lbs (.23 kg).
- 30 Micron filtration recommended.



PSHV25



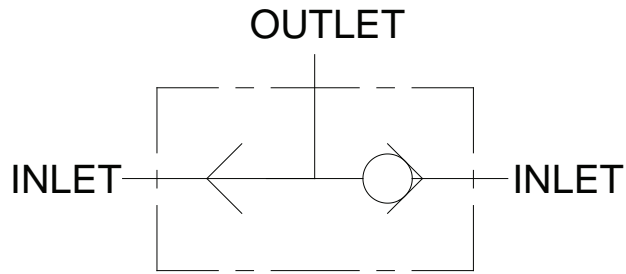
PSHV50C



ISO 9001:2008 WITH DESIGN  
Certificate #02.002.1



402.344.4434 • [www.brand-hyd.com](http://www.brand-hyd.com)



PSHV25



PSHV50C

### MATERIALS:

- Cast Iron Body
- Buna N O'Rings
- Hardened Steel Ball

### FEATURES:

- HARDENED STEEL BALL for wear resistance and greater durability.
- BALL TYPE CONSTRUCTION for minimal leakage.
- LOW AND HIGH FLOW CAPACITY for any type of application.



**SHV – GENERAL INFORMATION:**

The Brand, shuttle valve has two inlet ports and one outlet port. The purpose of the shuttle valve is to accept flow from the inlet with the higher pressure and to route it to the outlet, while keeping the inlet flows isolated from one another. We manufacture shuttle valves in two sizes SHV50C and SHV25. The SHV50C has 1/2" NPT ports, capable of 0-15 gpm (0-57 lpm) and a peak pressure drop of 15 psi (1.0 bar). SHV25 has 1/4" NPT ports, capable of 0-5 gpm (0-19 lpm) and a peak pressure drop of 50 psi (3.4 bar).

Paint (Optional) (P) painted black (other colors available, consult factory), (MP) epoxy coating.

**DIMENSIONAL DATA: Inches & [millimeters]**

**SHV**

